



60 GHz Wireless Dock Basic Model

Model 107007



User Manual

Email: support@cablematters.com

Table of Contents

1. INTRODUCTION	1
1.1 Introduction	
1.2 Copyright and Trademarks	
1.3 FCC Compliance Statement	
2. PRODUCT OVERVIEW	
2.1 Package Contents	
2.2 Wireless Dock Features	2
2.3 System Requirements	
2.4 Dock Placement	
3. CONNECTION AND OPERATING INSTRUCTIONS	3
3.1 Installation Checklist (before pairing the Dock)	
3.2 Panel Diagrams.....	4
3.3 Pairing the Wireless Dock	5
3.4 Power and LED Indicators.....	6
3.5 Function Button	
3.6 Wireless Dock Manager Software	7
3.7 Configuring a Display with HDMI.....	8
3.8 Connecting a USB Peripheral Device	
3.7 Configuring a Display with HDMI.....	8
3.8 Connecting a USB peripheral device	
3.9 Troubleshooting Tips.....	9
4. TECHNICAL SPECIFICATIONS	10
5. WARRANTY AND SUPPORT	
5.1 Customer Support and Contact Information	
5.2 Warranty Information	
5.3 Limitations of Liability	

1. INTRODUCTION

1.1 Introduction

Thank you for your purchase from Cable Matters® Inc., the 'Reliable Connectivity' company. This User Manual provides an overview of the features and installation of the

60 GHz Wireless Dock Basic Model

Please read these instructions carefully before connecting, operating or configuring this product. Keep this user manual for future reference.

Contact support@cablematters.com for questions or product support.

1.2 Copyright and Trademarks

Specifications are subject to change without notice. Cable Matters is a registered trademark or trademark of Cable Matters Inc. All rights reserved. All other trademarks are the property of their respective owners.

HDMI, the HDMI logo, and High-Definition Multimedia Interface are trademarks or registered trademarks of HDMI Licensing, LLC in the United States and/or other countries.
USB Type-C™ and USB-C™ are trademarks of USB Implementers Forum
Thunderbolt and the Thunderbolt Logo are trademarks of Intel Corporation in the U.S. and/or other countries.
Intel is a trademark of Intel Corporation or its subsidiaries in the U.S. and/or other countries.
Wi-Fi is a registered trademark of Wi-Fi Alliance

1.3 FCC Compliance Statement

This device complies with Part 15 of the FCC Rules. Operation is subject to the following two conditions: 1) This device must not cause harmful interference, and 2) this device must accept any interference received, including interference that may cause undesired operation.

2. PRODUCT OVERVIEW

2.1 Package Contents

Please check that the following items are contained in the package:

- 1 x 60 GHz Wireless Dock Basic Model
- 1 x Cradle Stand
- 1 x AC Power Adapter
- 1 x User Manual (available in a PDF from cablematters.com)

2.2 Wireless Dock Features

- Connect a computer with a WiGig antenna and wireless card
- Connect four USB 3.0 Type-A (5 Gbps) peripherals
- Connect an external display with HDMI input
- K-Slot style security port for attaching a cable lock
- Cradle stand to support the Dock

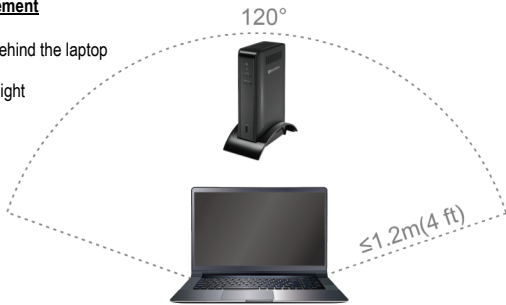
2.3 System Requirements

Computer	WiGig enabled computer Intel Triband Wireless card
Supported OS:	Windows 10
Software	Intel Wireless Dock Manager
External Display:	HDMI input port and an HDMI cable
USB 3.0:	USB 2.0 or 3.0 cable to connect a peripheral device
Power:	AC outlet (US Standard)

Note: All cables to connect devices to the Dock are sold separately

2.4 Dock Placement

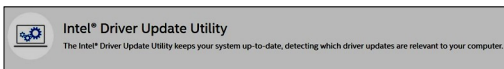
- 120 ° angle behind the laptop
- 4 foot range
- Clear line of sight



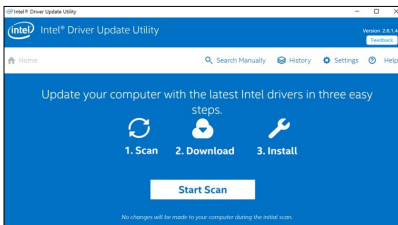
3. Connection and Operating Instructions

3.1 Installation Checklist (before pairing the Dock)

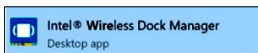
- Locate an AC power outlet within 5 feet to provide power to the Dock
- Place the Dock behind your laptop within 4 feet for the best performance
- Attach an HDMI cable (sold separately) to an external display and the Dock to view all of the pairing and password functions. See page 8 for details.
- Download the latest wireless drivers with the **Intel Driver Update Utility**. This utility will check for any updated wireless drivers and help you find computer updates from the computer manufacturer



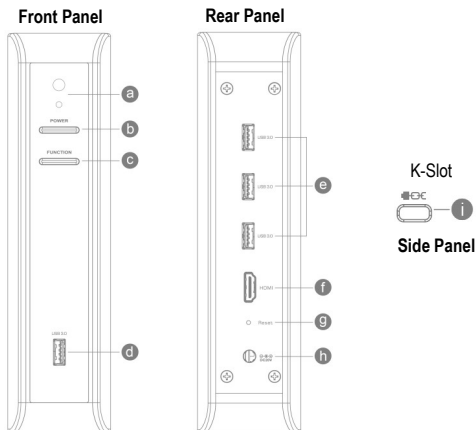
- Use the search box in the Windows taskbar to find the utility:



- Download the latest version of the **Intel Wireless Dock Manager** software
<https://downloadcenter.intel.com/download/26204/Intel-Wireless-Dock-Manager-Software>



3.2 Panel Diagrams



Front Panel

- a) LED Indicator for power and connection status
- b) Power button to turn the Dock on and off
- c) Function button for pairing and disconnecting the computer
- d) USB 3.0 (5 Gbps) port to attach USB 3.0/2.0 peripherals

Rear Panel

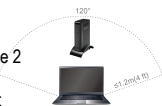
- e) 3 x USB 3.0 (5 Gbps) port to attach USB 3.0/2.0 peripherals
- f) HDMI video out port
- g) Factory reset pin hole (insert a pen tip for 5 seconds with the Dock powered on)
- h) AC adapter power cord port

Side Panel

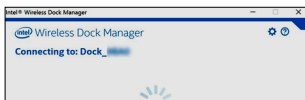
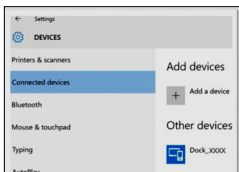
- i) K-Slot security port for connecting a cable lock

3.3 Pairing the Wireless Dock

- 1) Insert the Dock into the cradle stand and place it as shown on page 2
- 2) Connect the AC power adapter to the Dock and an electrical outlet
- 3) Connect an **HDMI** cable from the Dock to an external display
- 4) Press the **Power** button to turn on the Dock and check that the blue LED is lit

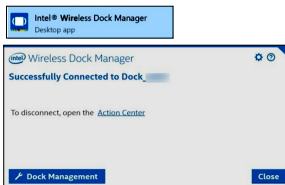


- 5) Open the **DEVICES** menu in Windows
- 6) Select **+ Add a device** to search for the Dock. Look for the Dock device name Dock_XXXX (four assigned letters and numbers)



The connected display prompts you to press the Function button.

- 7) Open the Intel Wireless Dock Manager
- 8) Press the **Function** button on the Dock to complete pairing
- 9) The Dock Manager software confirms that the Dock is connected








3.4 Power and LED Indicators



Power: Blue LED power indicator is lit when the Dock is connected to power and the **Power** button has been depressed.

Connection Status LED Indicator (for a wireless connection)

LED COLOR		STATUS
Yellow		Ready to connect
Green		Dock connected
Green (blinking)		Firmware upgrade in process
Off		Dock disconnected
Red		Error

3.5 Function Button



FUNCTION	DOCK STATE	ACTION	RESULT
Initial/New Pairing	Not Connected	Short Press *	Connect to Dock
Engage Sleep	Connected	Short Press	Puts laptop to sleep **
Disconnect Dock	Connected	Long Press ***	Disconnect Dock
Wake Dock	Connected	Short Press	Wakes laptop
Wake Monitor	Not in range	Short Press	View monitor

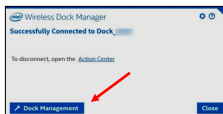
* Short Press = > 2 seconds

** When supported by laptop power options

*** Long Press = 3-10 seconds

3.6 Wireless Dock Manager Software

Click on **Dock Management** tab to open the menu



Information

Change the name of the Dock

Check for software version 2.6.1.102 or newer

Dock Access Settings

Individual - Connect automatically

Shared - Manually select Dock from device list



Public - Requires pairing to the Dock each time

Confirmation Settings

Push button - Press *Function* button to pair Dock

Pin entry - Enter assigned 8-digit PIN to pair

Note: A display must be connected to view the assigned PIN. A reset is required if PIN is lost.

Signal Preferences

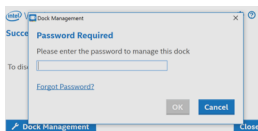
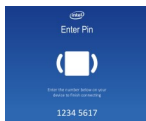
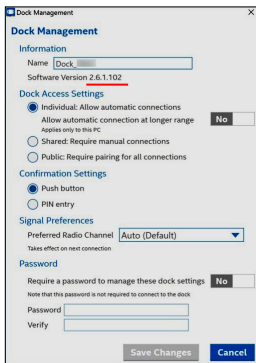
Keep at Auto (Default) setting

Password

Password up to 30 characters to manage settings

Note: A reset is required if password is lost

Select **Save Changes** when finished



3.7 Configuring a Display with HDMI

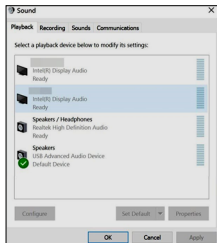
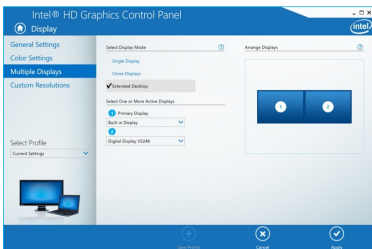


The Dock supports an HDMI display up to 2560x1600 @ 60Hz

- 1) Select the HDMI video input from the display menu
- 2) Open the **Intel HD Graphics Control Panel** from the Windows search bar
Clone or Extend the display
Adjust the video resolution and refresh rate

- 3) Adjust the audio from the Sound icon in the Windows notification area
Locate the connected display and select **Set Default**

Note: HDCP is not supported by the Dock for viewing protected video content



3.8 Connecting a USB peripheral device



- 1) Connect a USB 2.0 or 3.0 device to the Dock
- 2) The device should be recognized after downloading any needed drivers
- 3) Use *Safely Remove* or *Eject* to remove the device before unplugging

Note:

- USB 3.0 ports provide trickle charging (900mA) and data transfer

3.9 Troubleshooting Tips

Drivers & Software

- Download the Intel Driver Update Utility to check for updated WiGig drivers
- Check for updated wireless drivers from your laptop manufacturer
- Use the latest version of the Intel Wireless Dock Manager to configure the Dock settings

Note: Dock must be paired with the computer for connected devices to function

Dock

- Check that the Dock is connected to AC power and the blue LED is lit
- Check the placement of the Dock behind the laptop within 4 feet and 120°
- Connect a display with HDMI to view the Dock pairing information
- Insert a pen for 5 seconds into Reset pin hole if a PIN or password is forgotten

Cabling

- Check that all cable connections are secure
- Test device cables with different equipment

Laptop Source

- Blinking screen on laptop when Dock is connecting is normal
- Reboot the laptop and reset the Dock if there is no connection recognized

Connected Display

- Select a compatible video resolution with the laptop if there is no video
- Open the *Intel Graphic Control Panel* from Windows to change the settings
- Select the HDMI input from the display menu
- Adjust the audio level from the display menu

USB Peripheral Devices

- USB devices that require more than 900mA should be powered separately
- USB ports do not function as a stand-alone charger

Contact **support@cablematters.com** with a description of your computer

4. TECHNICAL SPECIFICATIONS

Host Connection	60 GHz 802.11ad
HDMI Video Out	19-Pin HDMI Female
USB 3.0 Ports	4 x USB 3.0 Type A
Power Input / Output	AC 100-240V / DC 12V/3A
OS Support:	Windows 10
Dock Dimensions (HxDxW)	7.9 x 4.8 x 2.0 Inches
Stand Dimensions (LxWxH)	6.6 x 3.1 x 1.6 Inches
Operating/Storage Temperature	32-104° F/-4-158° F
Compliance	C E, FCC
Warranty	Limited One-Year

Note: Specifications are subject to change without notice

5. WARRANTY AND SUPPORT

5.1 Customer Support and Contact Information

Cable Matters offers lifetime technical support as an integral part of our commitment to provide industry leading solutions.

Email us with any questions at support@cablematters.com.

5.2 Warranty Information

This product is backed by a limited one-year warranty. The warranty covers parts and labor costs only. Cable Matters does not warrant its products from defects or damages arising from misuse, abuse, or normal wear.

5.3 Limitation of Liability

In no event shall Cable Matters Inc. (including their officers, directors, employees or agents) be liable for any damages (whether direct or indirect, special, punitive, incidental, consequential, or otherwise), loss of profits, loss of business, or any pecuniary loss, arising out of, or related to the use of this product exceeding the actual price paid for the product (as allowed by state law). Specifications are subject to change without notice.